



Calculation Program for PWO

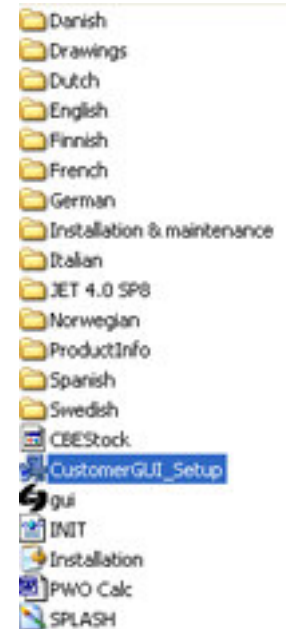
Installation manual

	Page:
1. Installation from downloaded files on www.oiltech.se	3
2. Installation from Oiltech CD	5
3. Troubleshooting	11

Installation from downloaded files on www.oiltech.se

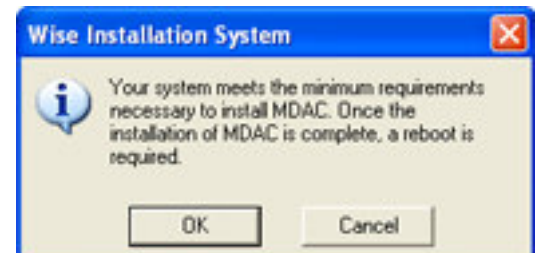
First locate and unzip the zip-file you downloaded from www.oiltech.se using for example winzip (can be downloaded from www.winzip.com).

Run the "CustomerGUI_Setup.exe" file to start the installation.

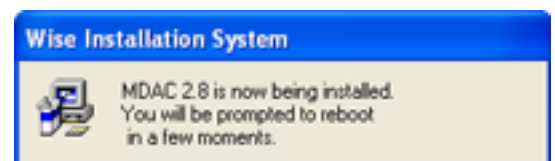


First the installation checks if your computer needs and meet the requirements for MDAC.

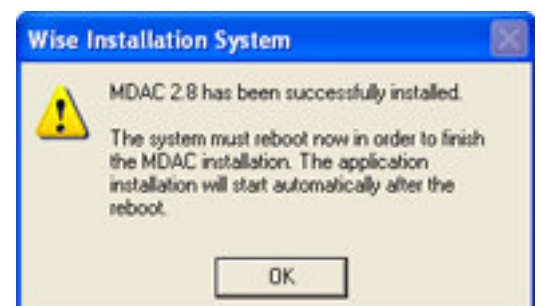
Press OK to continue installing MDAC 2.8. (If your computer already have MDAC 2.8 installed the installation skips the installation of MDAC).



During the installation of MDAC 2.8 this screen appears.

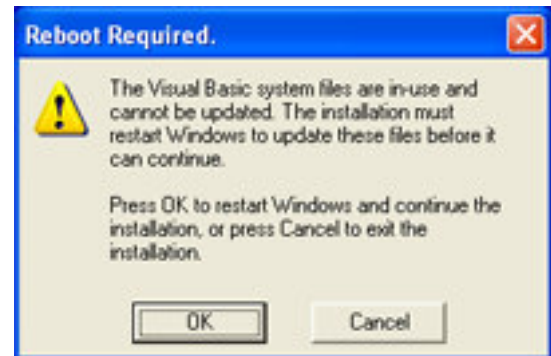


After the installation of MDAC 2.8 in finished a reboot is required. Press OK to reboot.



If your computer are not recently restarted the installation program might ask you to restart your computer before the installation can begin.

The following screen will apper:



If you have other programs running press Cancel button and save your work then start the installation again and press OK button to restart your computer.

The installation program will automatically start after you have logged on to your computer after restart.

The installation process manual continues on page 7.

Installation from Oiltech CD

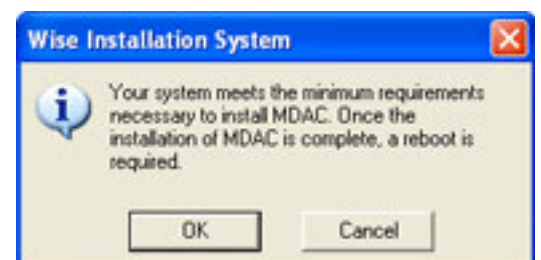
The Oiltech CD will automatically start and the following menu will appear:



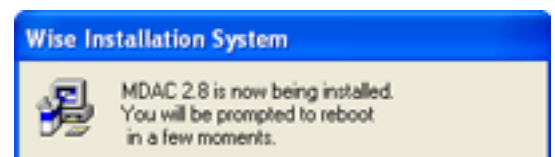
Click “Install Calculation Program” to start the installation program.

First the installation checks if your computer needs and meet the requirements for MDAC.

Press OK to continue installing MDAC 2.8.
(If your computer already have MDAC 2.8 installed the installation skips the installation of MDAC).



During the installation of MDAC 2.8 this screen appears.

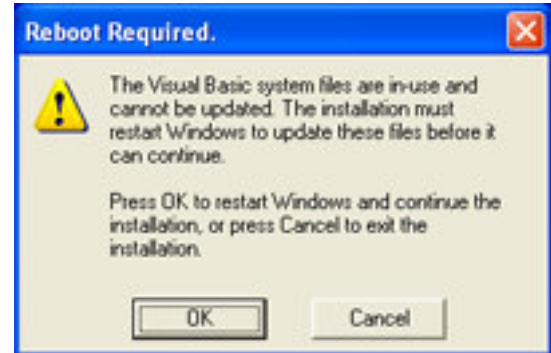


After the installation of MDAC 2.8 in finished a reboot is required.
Press OK to reboot.



If your computer is not recently restarted the installation program might ask you to restart your computer before the installation can begin.

The following screen will appear:



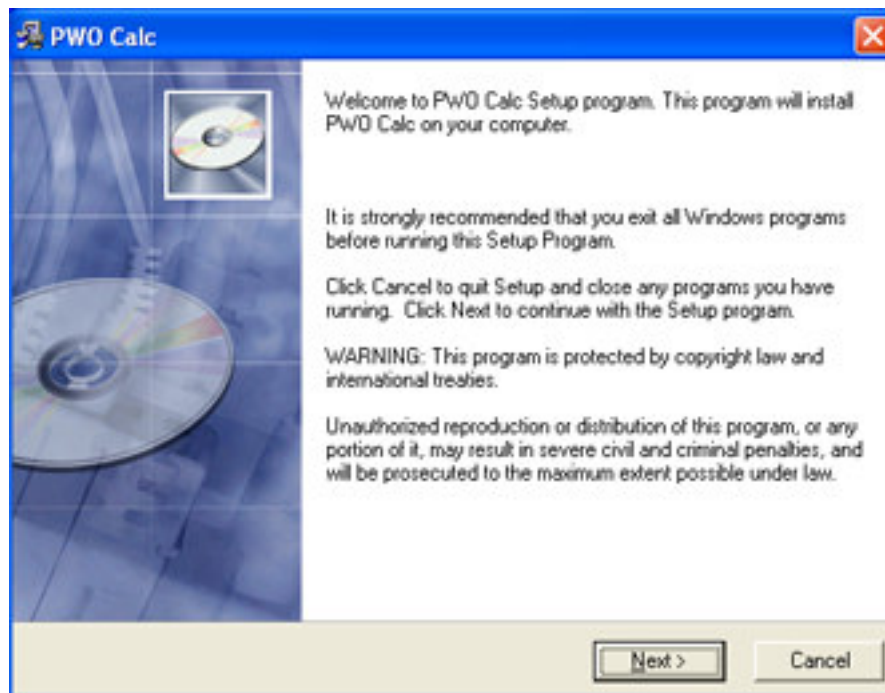
If you have other programs running press Cancel button and save your work then start the installation again and press OK button to restart your computer.

The installation program will automatically start after you have logged on to your computer after restart.

The installation process manual continues on page 7.

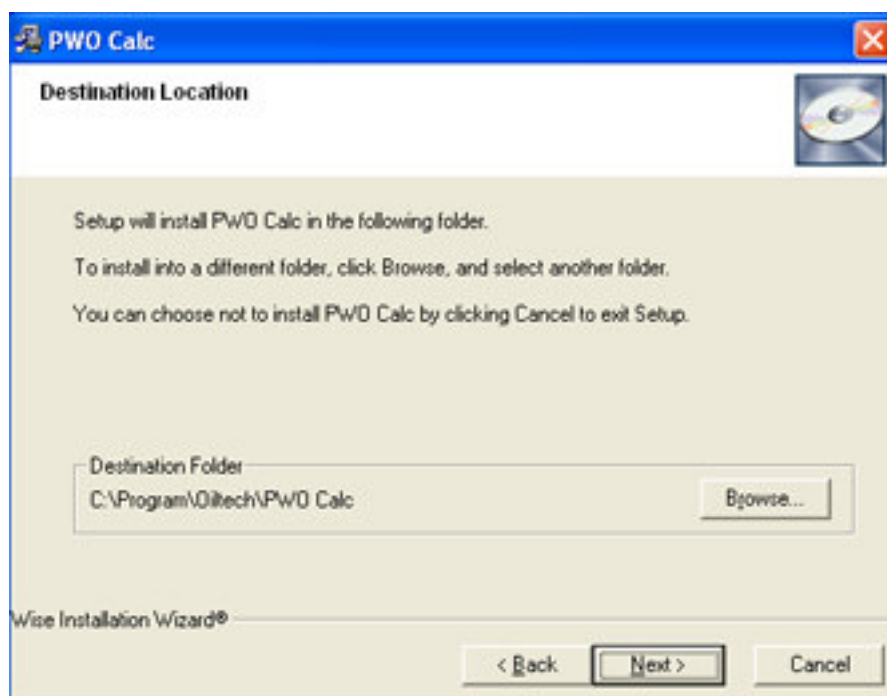
Installation process

The welcome screen:



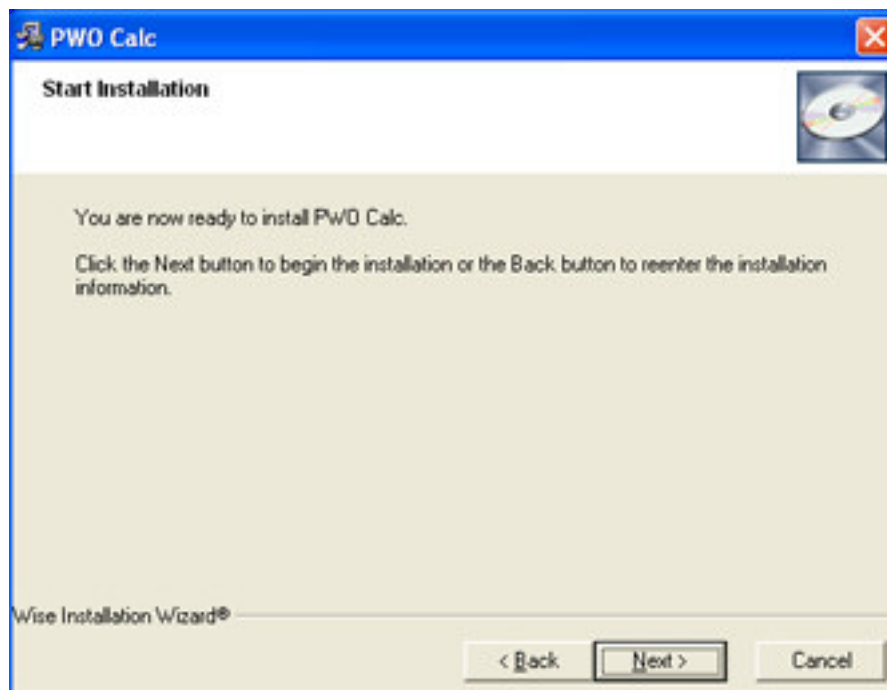
Press Next button to continue install.

The file destination screen:



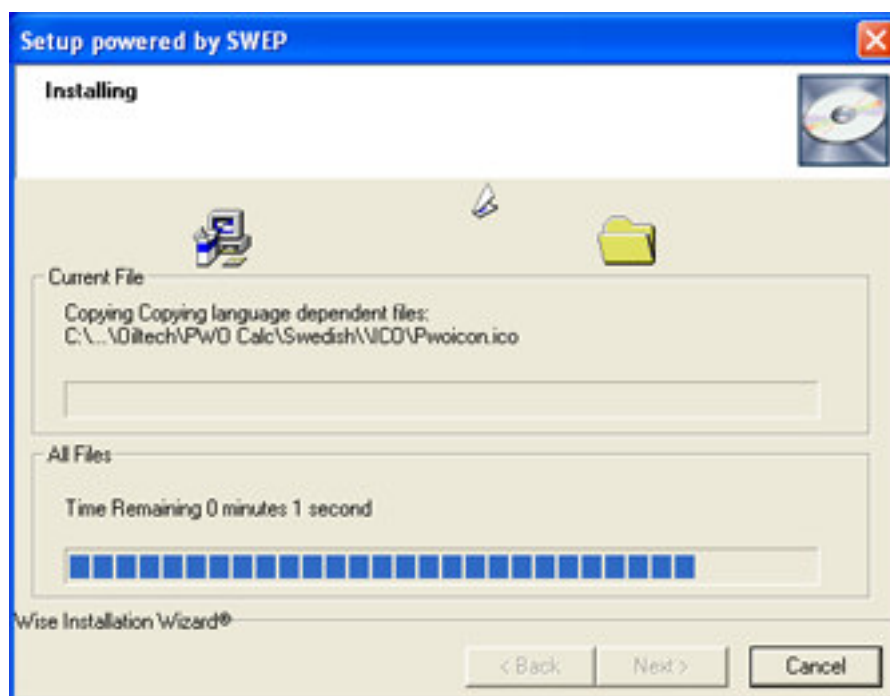
On this screen you can change installation folder for the PWO Calc installation. (Recommended is to install to the standard folder)

Start file copy screen:



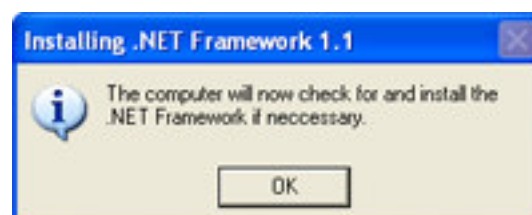
Press Next button to start the file copy.

File copying screen:

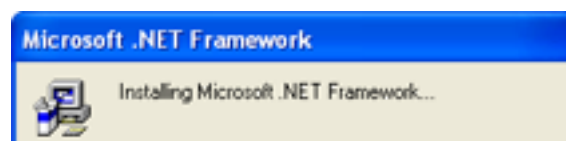


Here you don't have to do anything but wait for the file copy to finish.

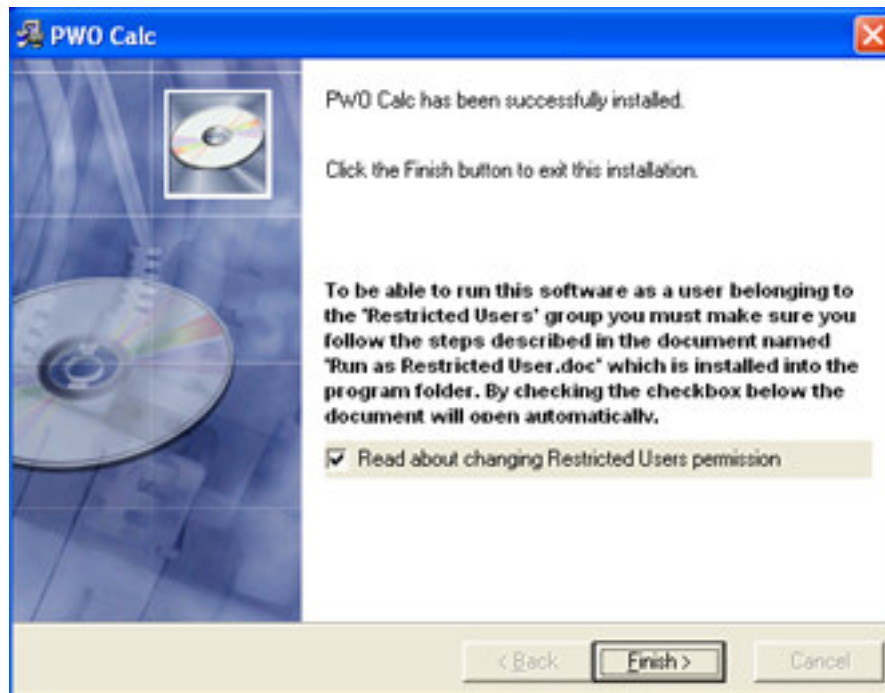
After the file copy the installation check if your computer has Dot Net Framework installed or not.



During the installation of Dot Net Framework the following screen appears.



Finished install screen:



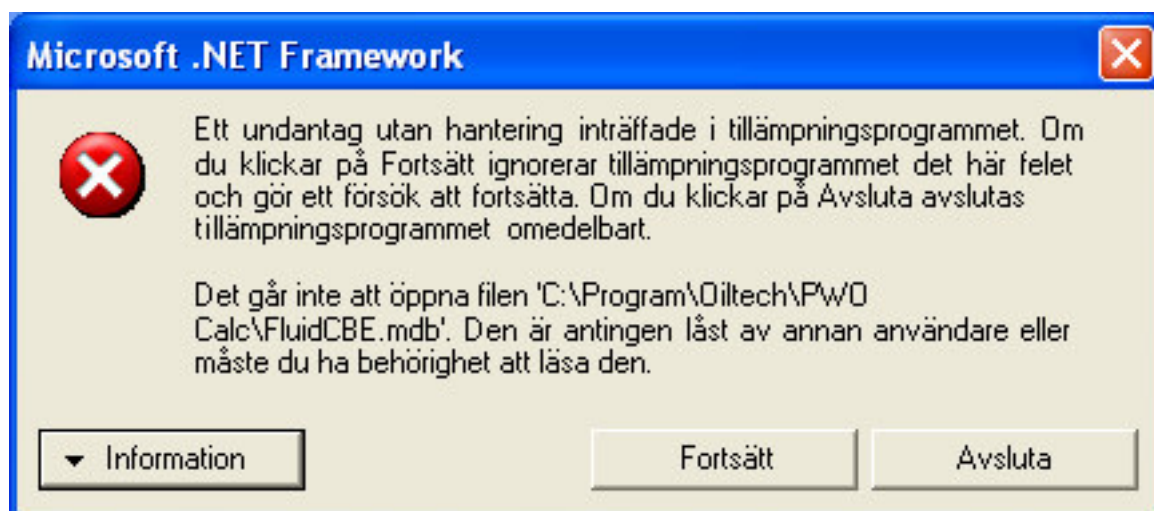
If you are an administrator and your user don't have administrative privileges on their computer please read the information "Read about changing Restricted Users permission".

Press the Finish button to close the installation.

Now you have installed the PWO Calc program successfully.

Troubleshooting

The program doesn't start and the following stop sign appears:

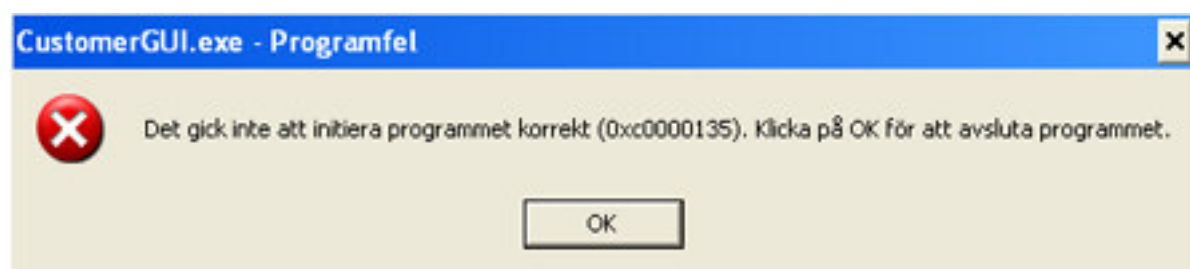


You don't have privileges to open the files needed for the program to run properly. Please contact your system administrator.

For system administrator:

Please read "Run as Restricted User.doc" located in the installation folder for PWO Calc program.

The program doesn't start and the following stop sign appears:

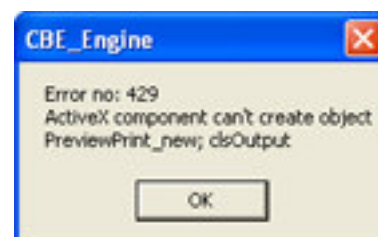


You don't have Microsoft Net Framework installed on your computer and the program requires it to run properly.

Please download it from www.microsoft.com.

You can't preview your calculation and the following error messages appears:

Microsoft Word are not installed on the computer or you are running some kind of server installation of word for example Citrix. Install Microsoft Word on the computer.



If you have any other troubles or question don't hesitate to let use know.



Tel: +46 8 636 07 00
Email: info@oiltech.se